

\$4.95

Journal of the American Philatelic Society

# AMERICAN PHILATELIST

July 2012



## SUMMER OLYMPICS

# LONDON 2012



# Scenic American Landscapes Premium Stamped Cards

On June 23, at the ATA Stamp Exhibition Show in Lancaster, Pennsylvania, the Postal Service issued *Scenic American Landscapes Premium Stamped Cards* (Set 2), in a booklet of twenty cards with ten designs. The ten different designs showcase spectacular photographs originally featured on Scenic American Landscapes stamps from 1999 to 2012. Forever® postage is pre-printed on the cards, so mailing is easy!

**Denomination:** 32-cent Stamped Postal Card (Forever)

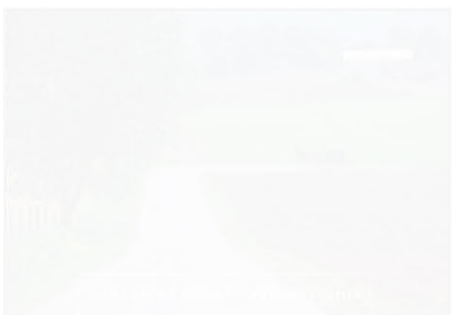
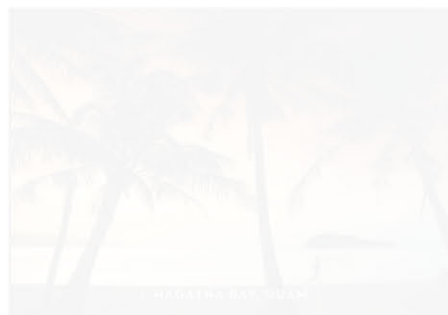
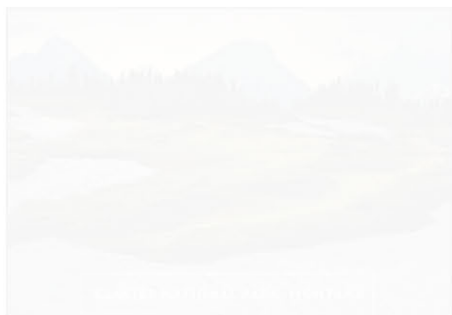
**Format:** \$15.95 Stamped Postal Card



Booklet of 20 (10 designs)  
**Designer:** Journey Group, Inc.  
**Photographer:**

13 Mile Woods, New Hampshire:

Jerry Monkman/Marcie Monkman  
**Glacier National Park, Montana:**  
 Michael Melford  
**Grand Teton National Park, Wyoming:** Dennis Flaherty  
**Hagåtña Bay, Guam:** Michael Yamashita  
**Lancaster County, Pennsylvania:**  
 James L. Amos  
**Niagara Falls, New York:** Kurt Ross  
**Nine-Mile Prairie, Nebraska:**  
 Michael Forsberg  
**Okfenokee Swamp, Georgia/Florida:** Jose Azel  
**Rio Grande, Texas:** Bruce Dale  
**Voyageurs National Park,**



**Minnesota:** Richard Oisentus  
**Modeler:** Donald Woo  
**Manufacturing Process:** Offset  
**Printer:** Banknote Corporation of America, Inc., Browns Summit, NC  
**Press Type:** Roland, 300  
**Paper Type:** Phosphor Tagged, Block  
**Adhesive Type:** N/A  
**Colors:** Black, Cyan, Magenta, Yellow, Purple  
**Card Orientation:** Horizontal  
**Booklet Size (w x h):** 169.93 x 107.95 mm

**Plate Numbers:** N/A  
**Marginal Markings:** N/A  
**Front:** *Title:* "SET TWO - SCENIC AMERICAN LANDSCAPES"; TWENTY PREMIUM STAMPED CARDS  
**Back:** ©2012 USPS; USPS logo; Header: "SCENIC AMERICAN LANDSCAPES"; SET TWO: TWENTY PREMIUM STAMPED CARDS; Stamp image and name of landscape; Descriptive text; Barcode 09892668; ITEM NO. 989266; \$15.95; AIC 092; MADE IN THE USA



### Sailboat Printer-Ready Stamped Card

On June 22, at the ATA Stamp Exhibition Show in Lancaster, Pennsylvania, the Postal Service issued a *Sailboat* printer-ready stamped card, four-up (Forever® priced at 32 cents) in one design. The new cards are sold only as pre-packs of ten card sheets each (four cards per sheet); the selling price is \$14.10 per pack. The product is designed for use by customers who want to be able to add addresses, return addresses, and/or messages, and is ideal for using with personal or small office printers.

The *Sailboat* stamped card was issued in the following formats:

- Single-cut cards
- Double-reply cards
- Sheet of 40 cards



**Denomination:** 32-cent Stamped Card Forever  
**Format:** Printer-Ready (4-Up Pack of 10)  
**Designer/Art Director/Typographer:** Derry Noyes, Washington, DC  
**Artist:** Burt Silverman, New York NY  
**Modeler:** Joseph Sheeran  
**Manufacturing Process:** Offset  
**Printer:** Sterling United, Inc., Amherst, NY  
**Press Type:** Komori, Lithrone S40P  
**Paper Type:** Nonphosphored Type III, Block  
**Adhesive Type:** N/A  
**Colors:** Black, Cyan, Magenta, Yellow  
**Image Orientation:** Horizontal  
**Card Size (w x h):** 139.70 x 107.16 mm  
**Plate Numbers:** N/A  
**Marginal Markings:** ©2011 USPS, Recycling logo

### Miles Davis/Edith Piaf

On June 12, in New York, New York, the Postal Service issued Miles Davis/Edith Piaf (Forever® priced at 45 cents) commemorative se-tenant pair stamps in two designs in a pressure-sensitive adhesive pane of twenty stamps. La Poste, the postal administration of France, will issue its stamps on the same day in Paris, France.

The USPS is proud to honor Edith Piaf, one of the few French popular singers to become a household name in the United States, and the great American jazz trumpeter Miles Davis, beloved in France, where he performed frequently. Art director Greg Breeding designed the stamps using an undated photo of Piaf from the Michael Ochs Archives and a photo of Davis, from 1970, by David Gahr.

**Denomination:** First-Class Mail Forever Commemorative



**Format:** Pane of 20 (2 designs)  
**Designer/Art Director/Typographer:** Greg Breeding, Charlottesville, VA  
**Engraver:** Trident  
**Modeler:** Avery Dennison, Designed & Engineered Solutions  
**Manufacturing Process:** Gravure  
**Printer:** Avery Dennison (AVR), Clinton, SC  
**Press Type:** Dia Nippon Kiko (DNK)  
**Paper Type:** Nonphosphored, Type III, Block  
**Adhesive Type:** Pressure-sensitive  
**Colors:** Pink, Blue, Purple, Black Tint, Silver Gray, Black  
**Stamp Orientation:** Vertical  
**Size (w x h):** 21.34 x 36.07 mm (image); 24.89 x 39.62 mm (overall); 215.90 x 196.85 mm (pane)  
**Plate Numbers:** "V" followed by six (6) single digits  
**Marginal Markings:** *Front:* Header: "MILES DAVIS /// EDITH PIAF"; Plate numbers in upper right and lower left corners of pane. *Back:* Header: "MILES DAVIS /// EDITH PIAF"; ©2012 USPS; USPS logo; Plate position diagram; Barcode 469500 in upper right and lower left corners of pane; Promotional text; Narrative text on back of each pane; Proprietary notice.

### Celebrate Scouting

On June 9, in Washington, DC, the Postal Service issued a *Celebrate Scouting* commemorative stamp (Forever® priced at 45 cents), in one design in a pressure-sensitive adhesive pane of twenty stamps. Celebrate Scouting, the "sister" stamp to the 2010 Scouting stamp, pays tribute to scouting organizations for the opportu-



nities and pleasures they have provided millions of youths worldwide. The stamp features a large silhouette of a girl with binoculars looking into the distance. A scene within the silhouette features a scout in mid-stride on a serious summer trek, in an environment composed of large redwoods, a lake, and a distant forested mountainside.

**Denomination:** First-Class Mail Forever Commemorative

**Format:** Pane of 20 (1 design)

**Designer/Art Director/Typographer:** Derry Noyes, Washington, DC

**Artist:** Craig Frazier, Mill Valley, CA

**Modeler:** Donald Woo

**Manufacturing Process:** Offset/Microprint "USPS"

**Printer:** Banknote Corporation of America, Inc., Browns Summit, NC

**Press Type:** Man Roland, 300

**Paper Type:** Phosphor Tagged, Overall

**Adhesive Type:** Pressure-sensitive

**Colors:** Yellow, Gold, Green, Red, Blue, Black

**Stamp Orientation:** Vertical

**Sizes (w x h):** 21.33 x 36.06 mm (image); 24.89 x 39.42 mm (overall); 149.35 x 181.53 mm (pane)

**Plate Numbers:** "S" followed by 6 single digits

**Marginal Markings:** *Front:* Plate block numbers in four corners of pane. *Back:* ©2011 USPS; USPS logo; Plate position diagram; Barcode 469400 in lower left and upper right corners of pane; Verso text; Promotional text.

## Bicycling

On June 7, in Minneapolis, Minnesota, the Postal Service issued a *Bicycling* commemorative stamp (Forever® priced at 45 cents) in four designs in a pressure-sensitive adhesive pane of twenty stamps. With this issuance of these stamps, the U.S.P.S. celebrates bicycling, one of the most popular outdoor activities in the country. Each of the four colorful stamps features a different kind of bike and rider: a young child just learning to ride with training wheels, a commuter pedaling to work, a road racer intent on the finish line, and an airborne BMX rider.

**Denomination:** First-Class Mail Forever Commemorative

**Format:** Pane of 20 (4 designs)

**Designer/Art Director/Typographer:** Phil Jordan, Falls Church, VA

**Artist:** John Mattos, San Francisco, CA

**Modeler:** Joseph Sheeran

**Manufacturing Process:** Offset/Microprint "USPS"

**Printer:** Ashton Potter (USA) Ltd., Williamsville, NY

**Press Type:** Mueller, A76

**Paper Type:** Nonphosphored Type III

**Adhesive Type:** Pressure-sensitive

**Stamp Orientation:** Horizontal

**Sizes (w x h):** 36.07 x 21.34 mm (image); 39.42 x 24.89 mm (overall); 183.90 x 151.13 mm (pane)

**Colors:** Black, Cyan, Magenta, Yellow, Copper

**Plate Numbers:** "P" followed by 5 single digits

**Marginal Markings:** *Front:* Plate numbers

*in four positions of pane. Back:* ©2011 USPS; Plate position diagram; USPS logo; Barcode 469300 in lower left and upper right corners of pane; Verso text on back of each pane; Promotional text at bottom of pane.

## Aloha Shirts

On June 2, at NAPEX in McLean, Virginia, the Postal Service issued *Aloha Shirts* definitive stamps in five designs in a pressure-sensitive adhesive booklet of ten stamps. Previously issued Aloha Shirts stamps include the following:

32-cent PSA Pane of 20

32-cent PSA Coil of 100

**Denomination:** 32-cent Definitive

**Format:** Booklet of 10 (5 designs)

**Designer/Art Director/Typographer:** Carl T. Herrman, North Las Vegas, NV

**Existing Photo:** Ric Noyle

**Modeler:** Joseph Sheeran

**Manufacturing Process:** Offset

**Printer:** Ashton Potter (USA) Ltd., Williamsville, NY

**Adhesive Type:** Pressure-sensitive

**Press Type:** Mueller Martini, A76

**Paper Type:** Nonphosphored, Type III

**Colors:** Black, Cyan, Magenta, Yellow

**Stamp Orientation:** Vertical

**Sizes (w x h):** 18.54 x 21.34 mm (image); 22.10 x 24.89 mm (overall); 44.20 x 165.10 mm (booklet)

**Plate Numbers:** "P" followed by 5 single digits

**Marginal Markings:** *Cover Side Header:* "ALOHA"; Ten 32-cent Stamps valid for the Postcard price-effective 1/23/12; Barcode 015645-688209; Promotional text. *Stamp Side:* ©2011 USPS; Plate

